

# POD OFFICE

SPINKS  
INVEST



# POD OFFICE

SpinksInvest is proud to introduce to you POD OFFICE; an exquisitely designed office space available in four different sizes.

**Our POD OFFICE can be constructed, delivered and erected on your site in as little as 2 weeks. Depending on your site's location.**





# S P E C I F I C A T I O N S

## **Internal Ceiling Height**

2430 - 3200mm

## **Foundation**

Precision-engineered steel base with water/moisture-resistant boards

## **Walling**

Steel framed fully-insulated 75mm wall panelling with a 28 gauge iron sheet cladding. Internally clad with gyproc board. Optional wood cladding

## **Roofing**

Steel framed fully-insulated 75mm roof panelling with a 28 gauge iron sheet cladding. Internally clad with gyproc board

## **Windows & Doors**

Aluminium framed 6mm glazed windows and sliding door

## **Decking**

5 square metres - Steel framed, covered in treated kiln-dried bluegum

## **Internal Flooring**

100% Water-proof cushioned vinyl in 3 colour options  
Optional Upgrade - Water-resistant engineered hardwood in 3 colour options

## **Lighting & Electrical**

6-12w LED Lighting throughout  
Adequate sockets throughout  
Optional Solar off-grid solutions available



# POD OFFICE ONE

**POD Dimension**

Floor area - 7.2 sqm

**POD Features**

- Optional expandable deck
- Suitable for 1 person
- Fully insulated
- Adequate lighting - internal and external
- Adequate sockets for office use

**Site Visit**

From Kshs 10,000/=

**Base Unit Starting**

Kshs 790,000/= inclusive of VAT

**Transportation**

Depending on Location  
Kshs 30,000 - 90,000/=

**On-site Logistics**

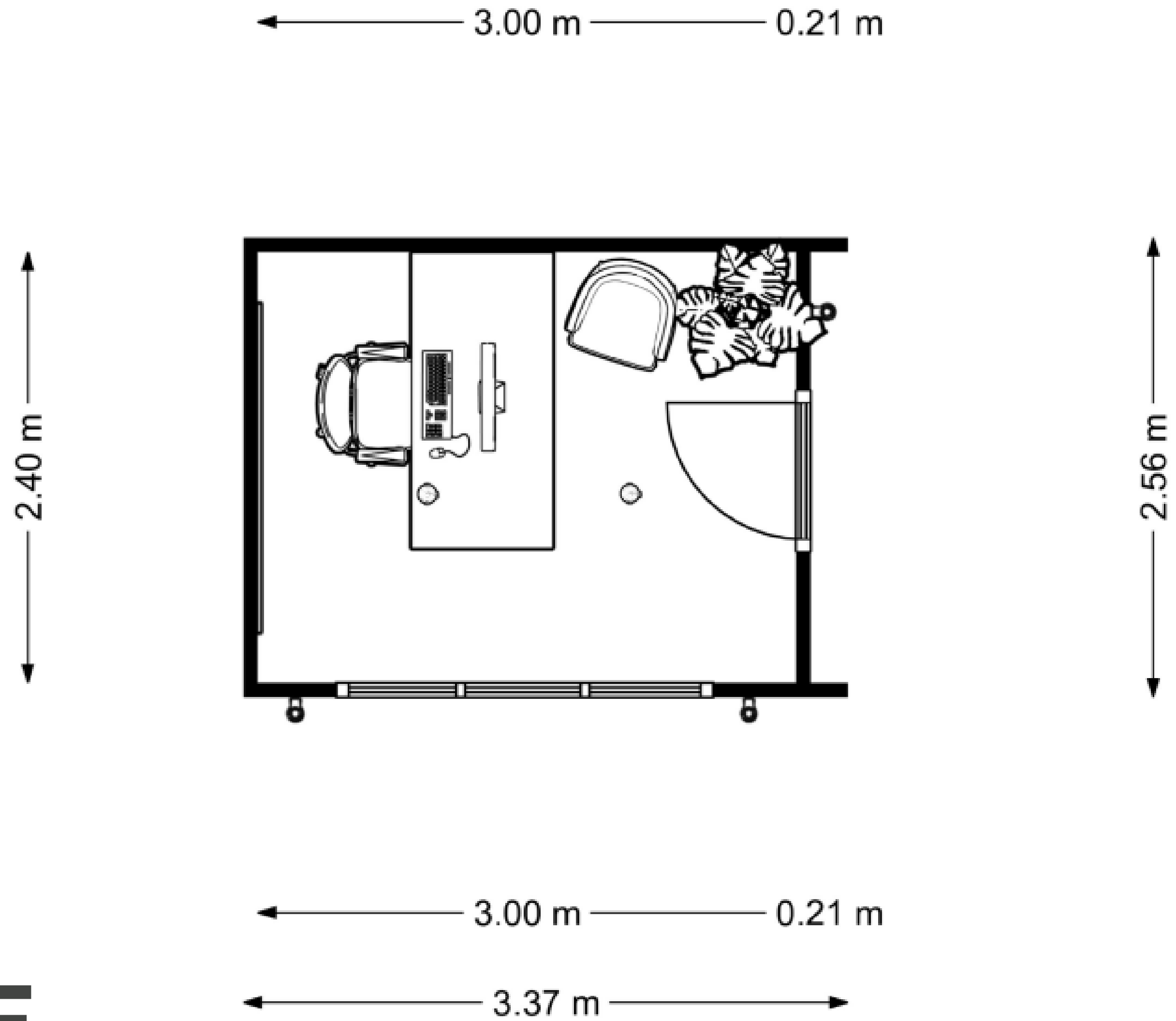
Depending on Location  
Kshs 20,000 - 70,000/=

**Expected delivery time**

2 - 3 Weeks

# POD OFFICE ONE

FLOOR PLAN





# POD OFFICE TWO

## POD Dimension

Floor area - 13.4 sqm

## POD Features

Optional expandable deck

Suitable for 2 people

Fully insulated

Adequate lighting - internal and external

Adequate sockets for office use

## Site Visit

From Kshs 10,000/=

## Base Unit Starting

Kshs 1,290,000/= inclusive of VAT

## Transportation

Depending on Location  
Kshs 60,000 - 150,000/=

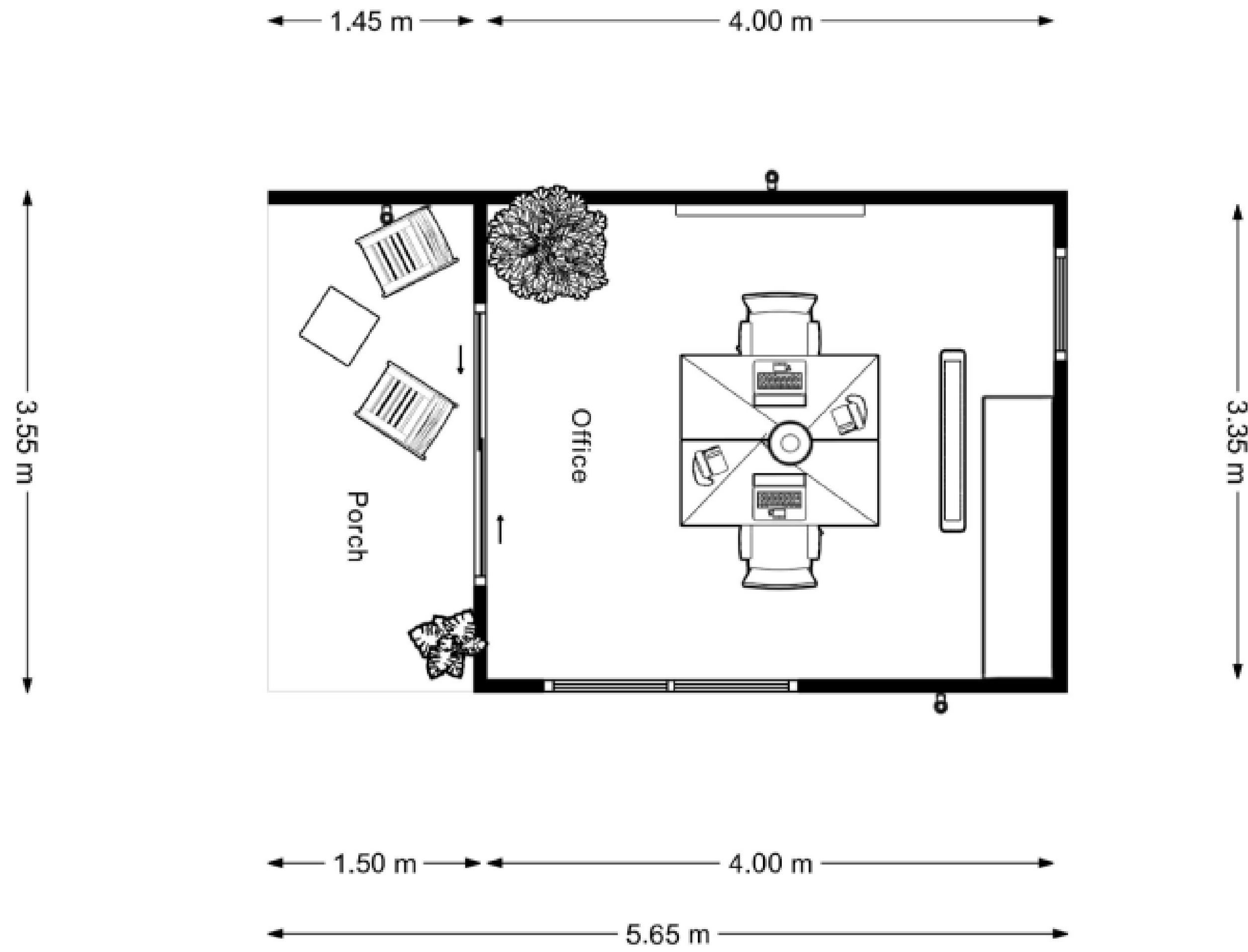
## On-site Logistics

Depending on Location  
Kshs 100,000 - 200,000/=

## Expected delivery time

3 - 4 Weeks





# POD OFFICE TWO

FLOOR PLAN



# POD OFFICE FOUR

## POD Dimension

Floor area - 17.5 sqm

## POD Features

Small expandable deck

Suitable for 2-4 people

Fully insulated

Adequate lighting - internal and external

Adequate sockets for office use

## Site Visit

From Kshs 10,000/=

## Base Unit Starting

Kshs 1,690,000/= inclusive of VAT

## Transportation

Depending on Location  
Kshs 70,000 - 200,000/=

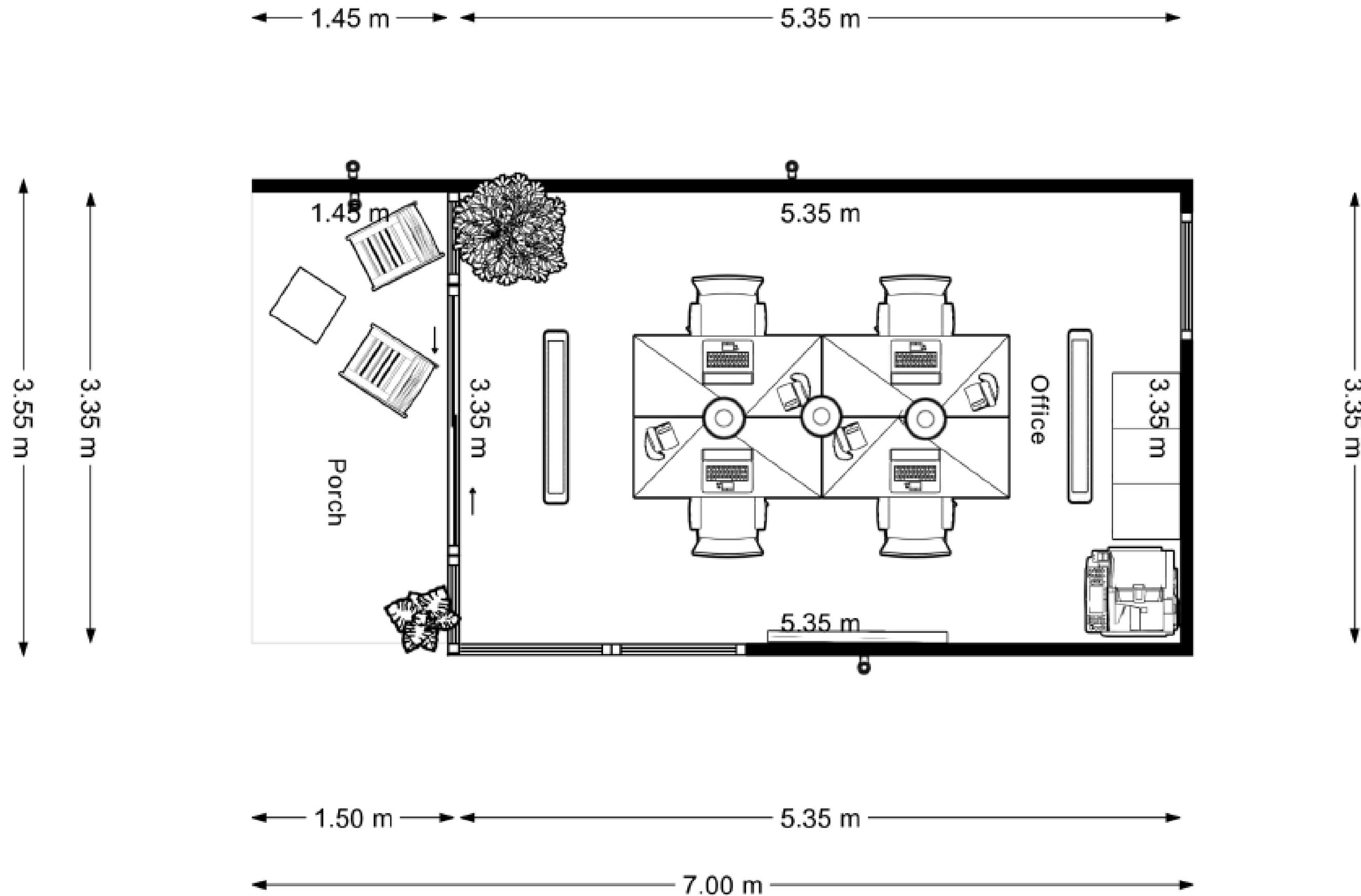
## On-site Logistics

Depending on Location  
Kshs 120,000 - 200,000/=

## Expected delivery time

4 - 6 Weeks





# POD OFFICE FOUR

FLOOR PLAN



# POD OFFICE SIX

**POD Dimension**  
Floor area - 28 sqm

**POD Features**  
Expandable deck  
Suitable for 4-6 people  
Fully insulated  
Adequate lighting - internal and external  
Adequate sockets  
Customisable into 2 separate offices with internal partition

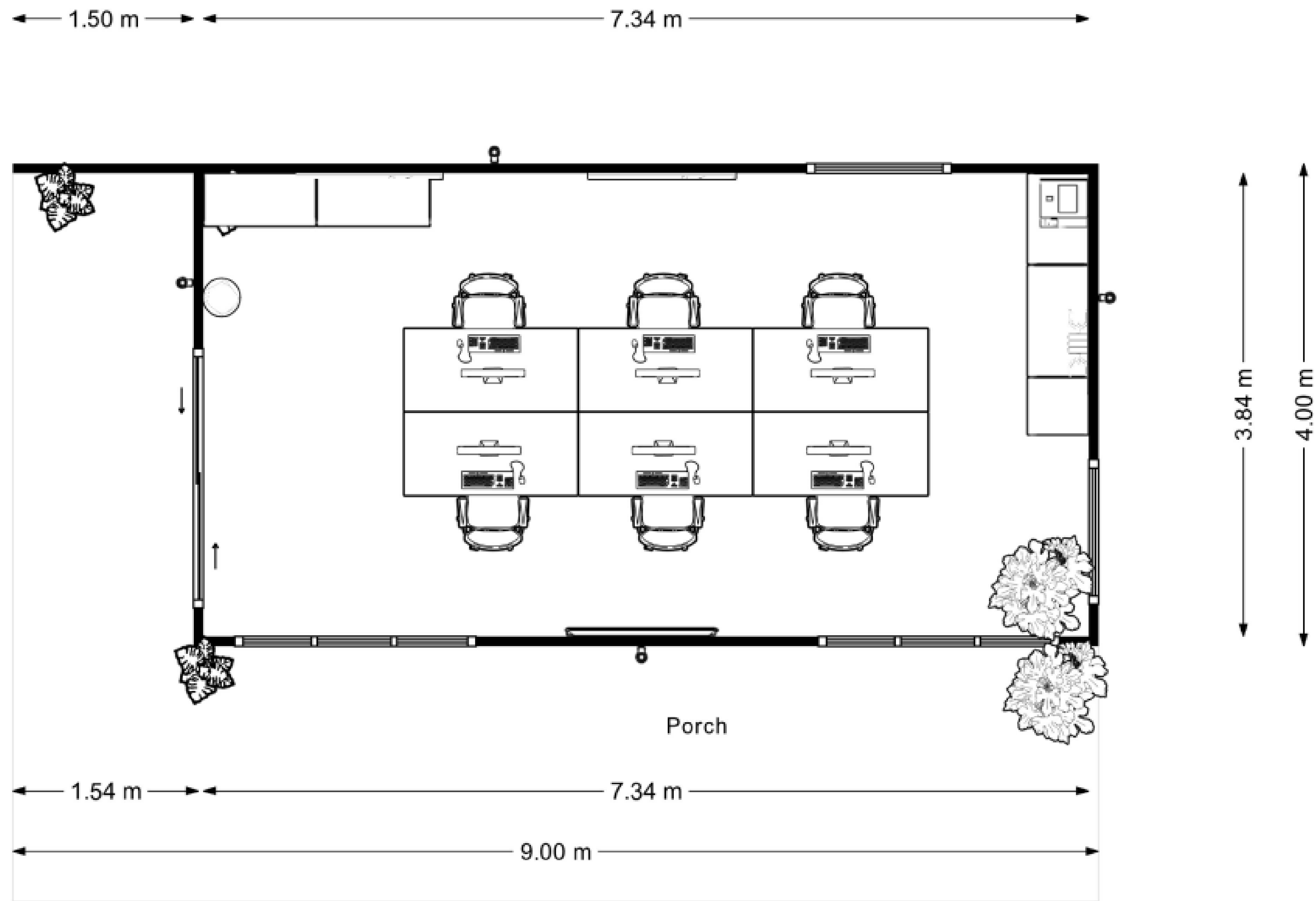
**Site Visit** From Kshs 10,000/=

**Base Unit Starting** Kshs 2,490,000/= inclusive of VAT

**Transportation** Depending on Location  
Kshs 70,000 - 200,000/=

**On-site Logistics** Depending on Location  
Kshs 150,000 - 230,000/=

**Expected delivery time** 5 - 7 Weeks



# POD OFFICE SIX

FLOOR PLAN



# POD OFFICE EIGHT

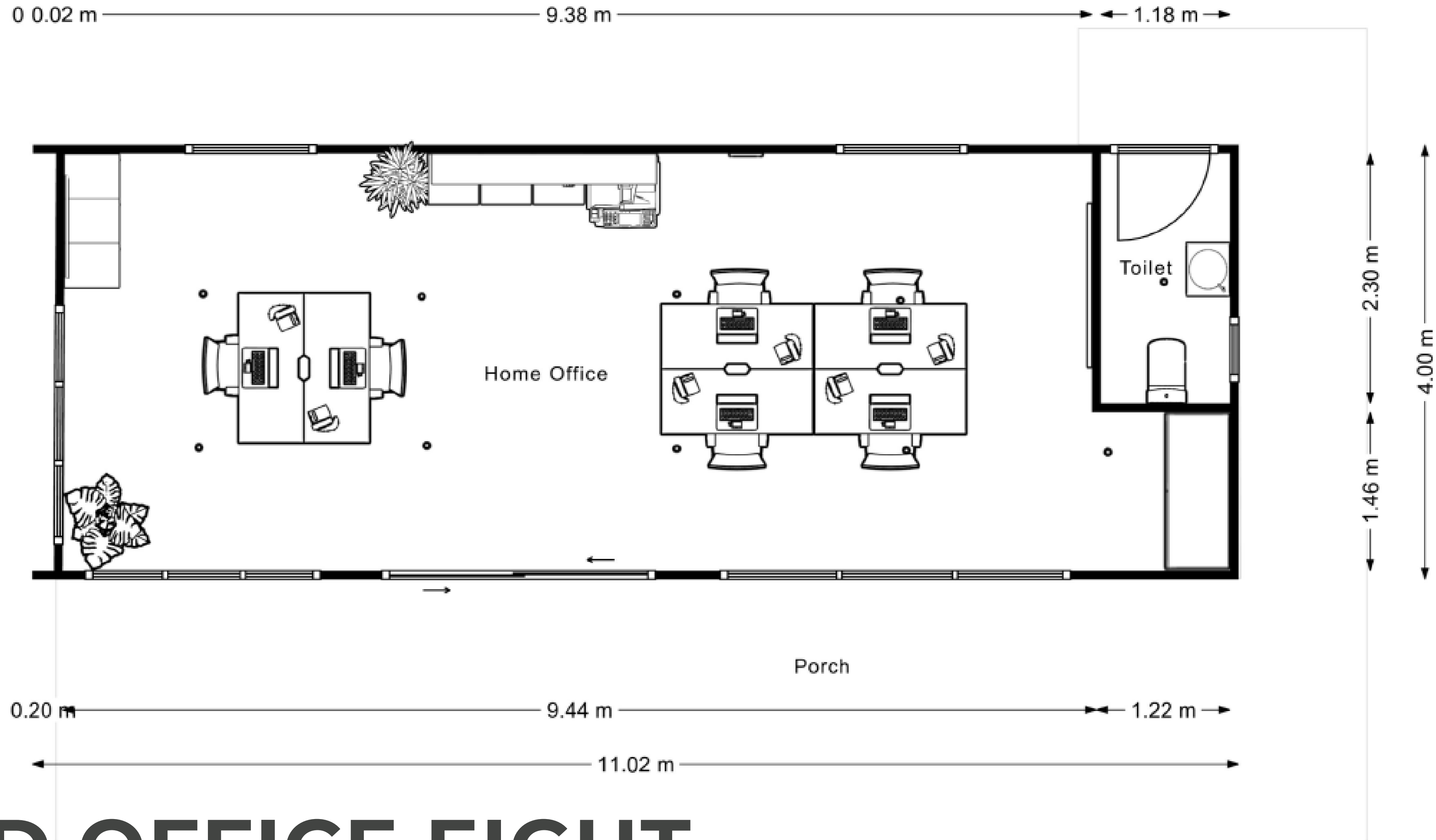
## POD Dimension

Floor area - 41 sqm

## POD Features

- Small expandable deck
- Suitable for 6-8 people
- Fully insulated
- Adequate lighting - internal and external
- Adequate sockets for office use
- Fully customisable internal layouts
- Optional toilet with separate external entrance

<b>Site Visit</b>	From Kshs 10,000/=
<b>Base Unit Starting</b>	Kshs 3,230,000/= inclusive of VAT
<b>Transportation</b>	Depending on Location Kshs 120,000 - 280,000/=
<b>On-site Logistics</b>	Depending on Location Kshs 160,000 -300,000/=
<b>Expected delivery time</b>	6 - 8 Weeks



# POD OFFICE EIGHT

FLOOR PLAN

# A D D O N S

**Optional extras that can be added to your POD.**

## **Solar power solution**

Whether you are completely off-grid or just need a back-up power solution we have partnered with some of the best suppliers of alternative power options. Solutions that you can monitor and control even when you are not in your POD.

## **Bathroom**

We offer either internally or externally accessible bathrooms as an add on to both POD OFFICE SIX and POD OFFICE EIGHT.

## **Decking**

We can add as much deck as you may require all around your POD. With options such as kiln dried bluegum, treated and dried grevillea and composite timber, the choice is yours. We offer per square metre pricing for decking enabling us to custom design decks to suit your needs.

## **Shade**

SpinksInvest has partnered with suppliers of the best quality shade sails, that can be custom made to the layout of your deck.



# S O L A R   O F F - G R I D   S O L U T I O N S

Our off-grid solutions provide a remarkable level of flexibility, guaranteeing a power-cut-free environment to avoid any disruptions in your busy schedule. These solutions empower the installation of our POD OFFICEs in diverse locations, eliminating the necessity for wiring or a connection to the grid. This ensures unparalleled adaptability and independence for your workspace.

Kshs 272,000/=

## POD OFFICE ONE

An ideal off-grid solution tailored for an individual, enabling you to operate a single computer/laptop, charge your phone, run a printer, power internal lights, and sustain three external security lights throughout the night.

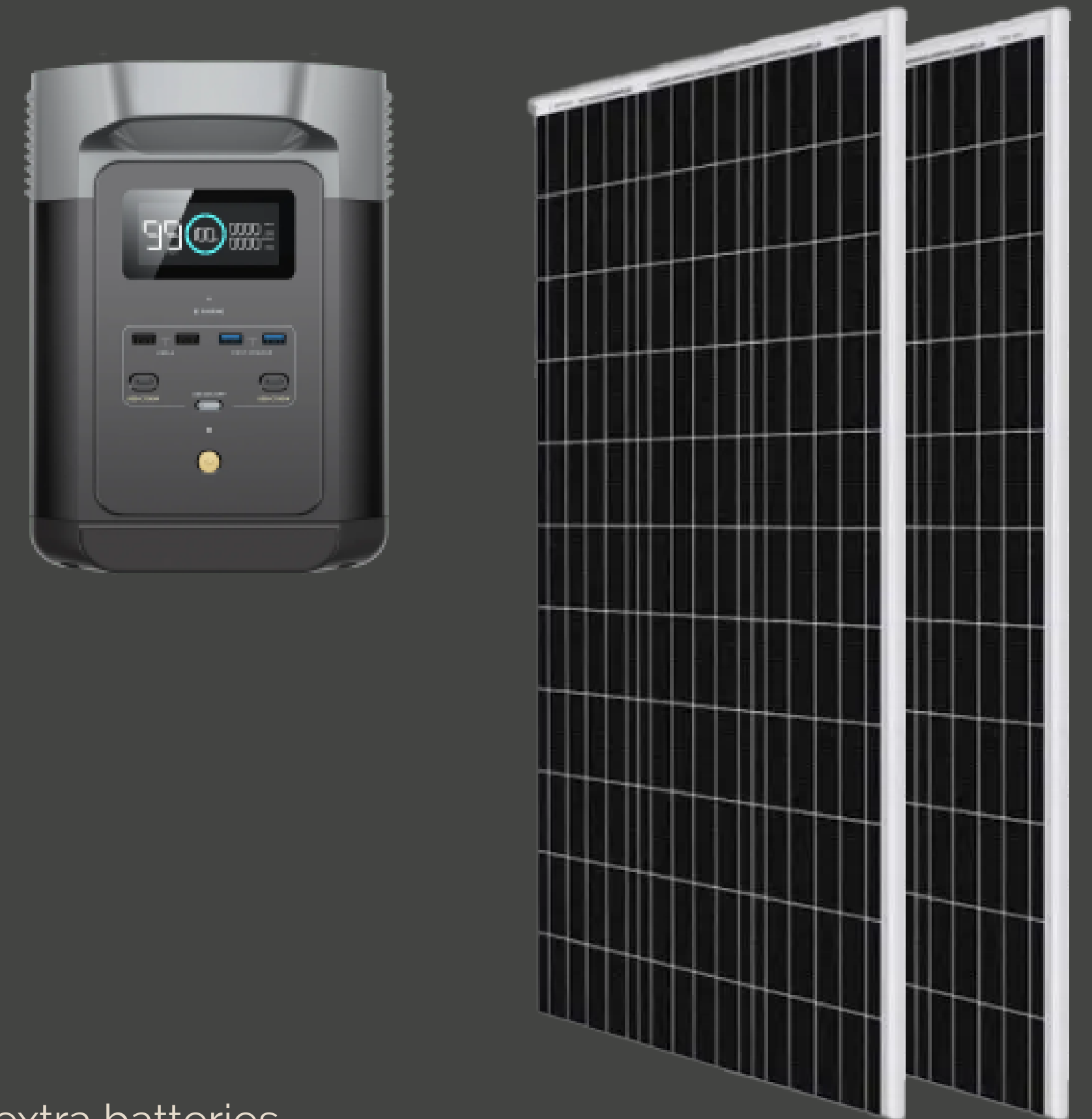
### What you get

- 1x EcoFlow DELTA 2 - 1kWh Portable Power Station with wifi control
- 2x 400w Solar Panels with roof mount
- 1x Wiring Kit
- 1x Photocell for automatic powering of security lights

### System Capabilities

- 1x Computer/Laptop, 1x Printer, Mobile Phone charging, Internal lights,
- 3x External security lights

If necessary, the system can be extended by incorporating additional panels and extra batteries.



Kshs 466,000/=

## POD OFFICE TWO & FOUR

An optimal off-grid solution designed for 2-4 individuals, providing the capacity to operate up to four computers/laptops, charge multiple phones, run a printer, power internal lights, and sustain three external security lights throughout the night.

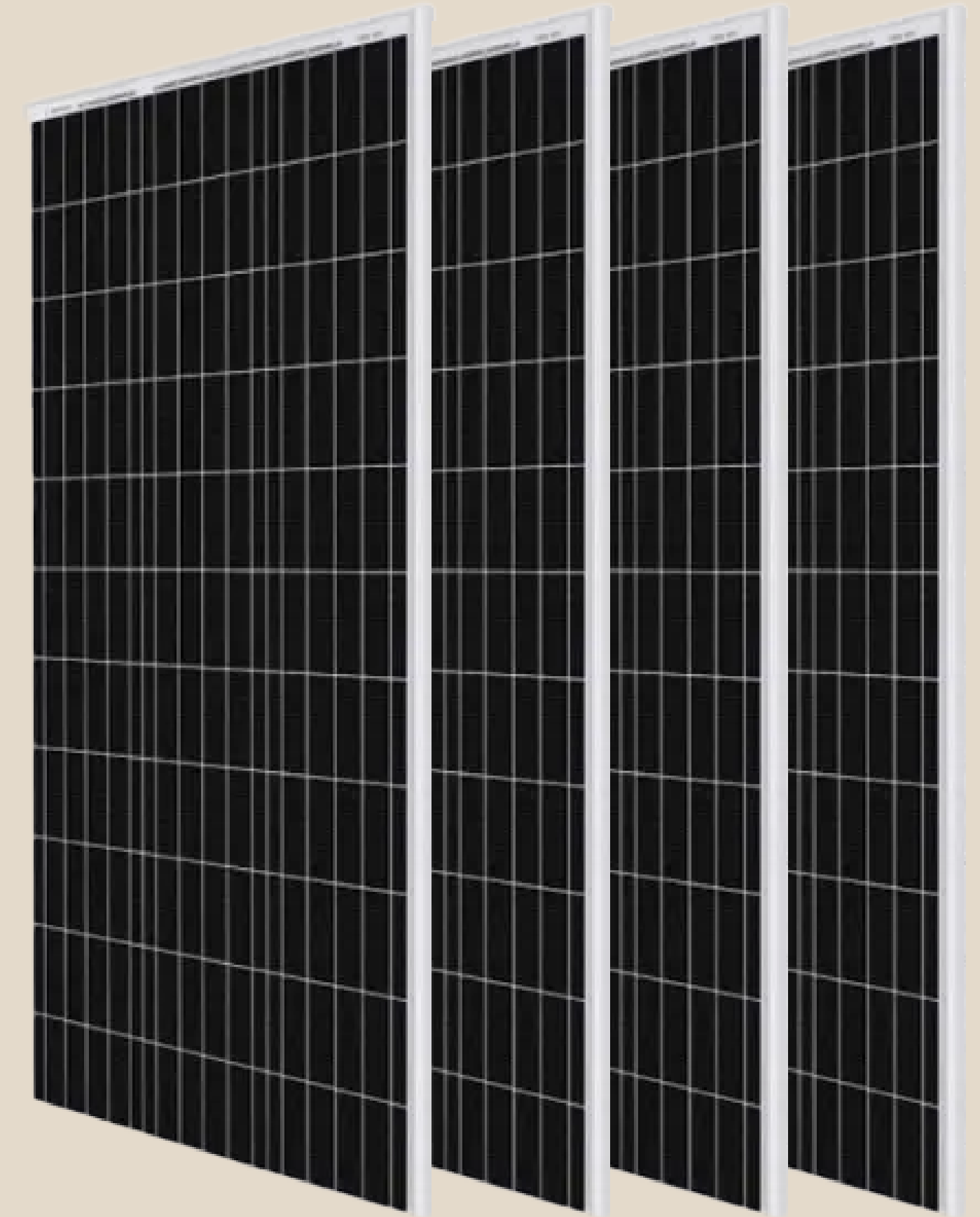
### What you get

- 1x EcoFlow DELTA Max - 2kWh Portable Power Station with wifi control
- 4x 400w Solar Panels with roof mount
- 1x Wiring Kit
- 1x Photocell for automatic powering of security lights

### System Capabilities

4x Computer/Laptop, 1x Printer, Mobile Phone charging, Internal lights, 3x External security lights

If necessary, the system can be extended by incorporating additional panels and extra batteries.



ECOFLOW



# Kshs 822,000/=

## POD OFFICE SIX - EIGHT

An ideal off-grid solution tailored for 4-6 individuals, providing the capability to operate up to six computers/laptops, charge multiple phones, run a printer, power internal lights, and sustain the operation of four external security lights throughout the night.

### What you get

- 1x EcoFlow DELTA Pro - 3.6kWh Portable Power Station with wifi control
- 6x 400w Solar Panels with roof mount
- 1x Wiring Kit
- 1x Photocell for automatic powering of security lights

### System Capabilities

6x Computer/Laptop, 1x Printer, Mobile Phone charging, Internal lights, 4x External security lights

If necessary, the system can be extended by incorporating additional panels and extra batteries.



Kshs 1,482,000/=

## POD OFFICE EIGHT

An optimal off-grid solution designed for 6-8 individuals, offering the capacity to operate up to eight computers/laptops, charge multiple phones, run a printer, power internal lights, and maintain the operation of four external security lights throughout the night power internal lights, and sustain three external security lights throughout the night.

### What you get

- 1x EcoFlow Power Kit - 5kWh FixedPower Station with wifi control
- 6-8x 400w Solar Panels with roof mount
- 1x Wiring Kit
- 1x Photocell for automatic powering of security lights

### System Capabilities

8x Computer/Laptop, 1x Printer, Mobile Phone charging, Internal lights, 5x External security lights

If necessary, the system can be extended by incorporating additional panels and extra batteries.



ECOFLOW

**SPINKS**  
**INVEST**